



Separately Managed Account

O'Shaughnessy International ADR Portfolios

4Q 2024

Separately Managed Accounts (SMAs) are investment services provided by O'Shaughnessy Asset Management, LLC (OSAM), a federally registered investment adviser. Client portfolios are managed based on investment instructions or advice provided by OSAM. Management is implemented by OSAM, or, in the case of certain programs, the program sponsor or its designee.

These materials are being provided for illustrative and informational purposes only. The information contained herein is obtained from multiple sources that are believed to be reliable. However, such information has not been verified and may be different from the information included in documents and materials created by the sponsor firm in whose investment program a client participates. Some sponsor firms may require that these materials be preceded or accompanied by investment profiles or other documents or materials prepared by such sponsor firms, which will be provided upon request. For additional information, documents and/or materials, please speak to your Financial Professional or contact your sponsor firm.

Gateway to investment specialists



\$1.6 Trillion

Assets under management¹

75+

Years of active management experience

150+

Countries with investors

1,600+

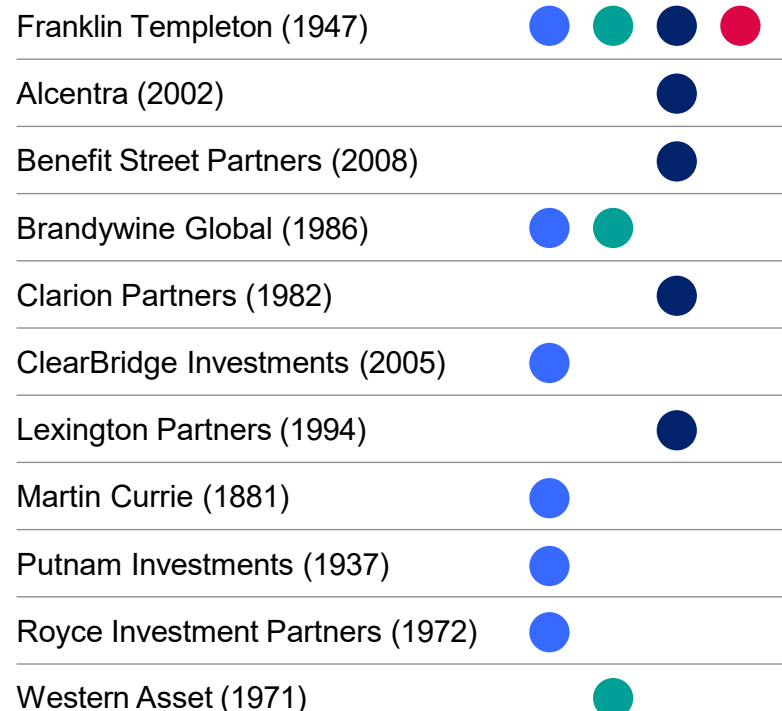
Investment professionals

Our Investment Capabilities (USD Billion)



Complemented by innovations in Sustainable and Impact investing, ETFs, Custom Indexing, Frontier Risk Alternatives, and others

Our Investment Managers Asset Classes



1. AUM is in USD as of 31 December 2024. Total AUM of \$1.6 Trillion includes \$63.4 Billion in cash management that is not represented here.

O'Shaughnessy Asset Management (OSAM)

Leading research and quantitative asset management firm since 1996.



Expertise in factor-based research and SMA management

- Implement disciplined strategies adhering to the fundamentals of OSAM research.
- History of building technology to improve research, portfolio management, and trading capabilities.



Leadership and employee longevity

- Average Principal tenure of 18 years.
- Invested alongside clients.



Developers of Canvas Custom Indexing

- Launched Canvas platform in 2019 specializing in tax management and custom SMAs.
- \$10.5 billion in Canvas AUM.

\$14.1 billion in assets*

Wholly-owned subsidiary of Franklin Templeton

Headquartered in Stamford, CT

Core Cultural tenets



Learn



Build



Share



Repeat

Data as of 12/31/2024.

*The AUM and AUA combined total represents \$13.5 billion of O'Shaughnessy Asset Management's assets under management and \$0.6 billion of assets under advisement as of 12/31/24. The information regarding AUA is supplemental, OSAM does not have control over the assets under advisement, implementation of the models, or execution of the trades.

O'Shaughnessy Asset Management

Our core investment tenets



Seek to maximize total, risk adjusted, and consistency of returns.



A stock's fundamental characteristics (or factors) are its drivers of return over time.

- Avoid those with poor factor profiles.
- Concentrate into those with the most attractive factor profiles.
- Mitigate idiosyncratic and governance risks using ESG factors.



Portfolio construction is key to amplifying good stock selection.

- Weightings should be designed to deliver a strong edge in the most effective factors.
- The sell discipline should be rigorously followed to consistently safeguard this edge.
- Risk management helps avoid negative events while still maintaining a factor edge.

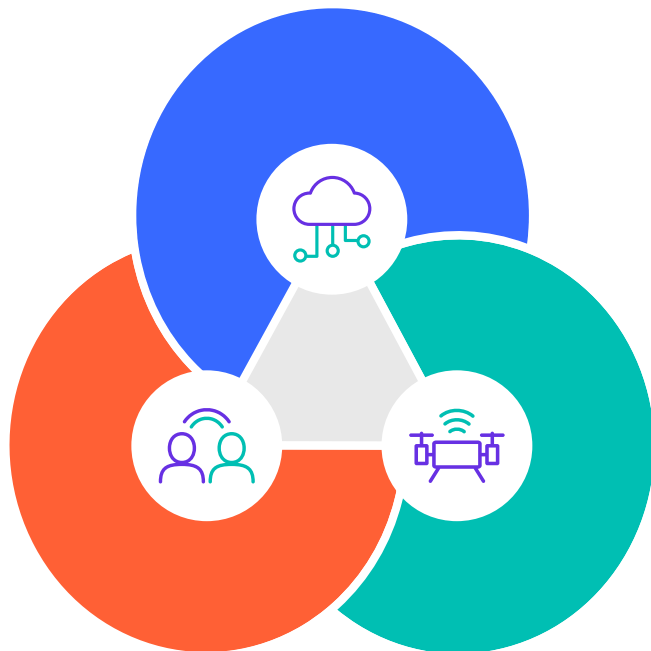


Minimize real-world costs through skilled trading and integrated tax management.



Maintain unyielding discipline.

Research platform: Best of breed data, proprietary technology, & expert people



Data

Research on hundreds of factors covering 85,000 stocks over time:

- 60+ years in the United States
- 25+ years in Developed International
- 20+ years in Emerging Markets

Technology

Proprietary technology developed to spec for our Portfolio Managers:

- Factor research
- Portfolio construction
- Trading
- Cost and tax management

Programming capabilities across 50%+ of firm's headcount

People

Research and Portfolio Management Team of 21

- Five CFA Charterholders and two post graduate degree holders
- Authors of five books on investing and more than 70 investing white papers
- O'Shaughnessy Research Partners - 8 formal relationships to date, with curious and expert independent researchers from varied industry backgrounds

Ongoing innovation while keeping to our core philosophy

Multi-factor theme building blocks

We screen out stocks that score poorly based on these characteristics...

Value

- Stocks trading at large discounts to current sales, earnings, EBITDA, and Free Cash Flow

Momentum

- Stocks with impressive and stable recent total returns

Financial Strength

- Stocks that use debt responsibly and aren't overly reliant on outside financing

Earnings Quality

- Stocks with strong cash flows and conservative accounting

Earnings Growth

- Stocks whose profitability is high and trending up

...and concentrate into those that are attractive based on these

Value, Momentum, and/or Shareholder Yield*

* Stocks returning high amounts of cash to shareholders through dividends and buybacks.

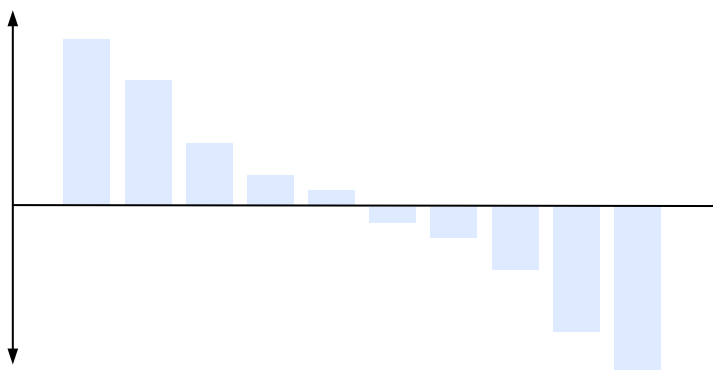
Not all factors work the same

Decile spreads on the same universe over the same time period can be used as a benchmark for effectiveness.

Some factors are great at selecting stocks with strong outperformance.

Selection Factors

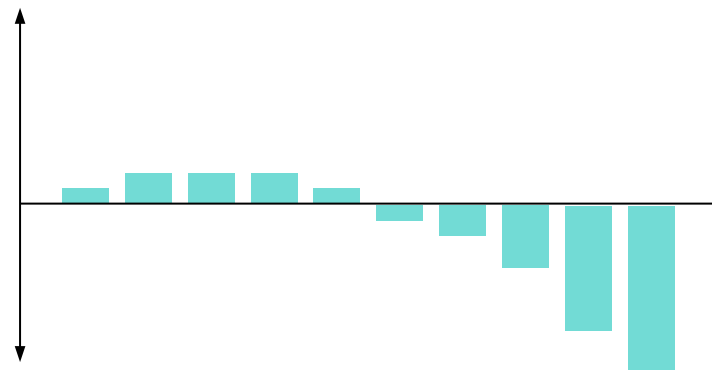
Value, Momentum, Shareholder Yield



Other factors are used better for screening out poor performers.

Screening Factors

Quality, Financial Strength, Earnings Growth



Building your portfolio of stocks with strong overall factor profiles

STEP 1

Establish Selection Universe

The investable universe includes all American Depositary Receipt (ADR) stocks with a market capitalization greater than \$200 million that meet liquidity criteria. MLPs are excluded from consideration. This results in a selection universe of approximately 500 stocks.

STEP 2

Eliminate Poor Quality

The universe is refined by excluding stocks scoring in the lowest decile of OSAM's Value, Momentum, Earnings Quality, Financial Strength, and Earnings Growth themes.

STEP 3

Stock Selection

After refining the selection universe to eliminate poor Quality, stocks are selected that score within the highest deciles of OSAM's Value, Momentum, and Shareholder Yield themes and satisfy risk-exposure constraints. OSAM defines Shareholder Yield as Dividend Yield plus Buyback Yield, where the latter is the net percentage change in a company's shares outstanding over the previous 12 months.

STEP 4

Position Sizing

Position sizing is determined by four factors: (1) the number of rebalances a security has qualified for purchase over the past year, (2) the recency of the qualification, (3) the stock's overall factor profile, and (4) region, sector, and industry risk constraints.

This process is refreshed monthly.

The investment process may change over time. The characteristics set forth above are intended as a general illustration of some of the criteria the strategy team considers in selecting securities for client portfolios. There is no guarantee that investment objectives will be achieved.

O'Shaughnessy International ADR

Overview

International ADR seeks to provide long-term appreciation through exposure to international equities, primarily using American Depositary Receipts (ADRs), that the manager believes rank favorably on the themes of Quality, Value, Momentum, and Yield. Stocks are selected and weighted based on conviction and are broadly constrained by region, sector, and industry.

Objectives

Long-term capital appreciation.

Key differentiators

- High conviction, high active share portfolio that concentrates on stocks with the most attractive factor profiles.
- Portfolio is “conviction-weighted,” meaning the portfolio is constantly re-oriented towards stocks with the current highest-ranking factor profiles.
- Exposure to unique factor “themes” (i.e., Value) that combine multiple underlying data points (i.e., Price-to-Sales) for a more holistic factor profile.

Portfolio positioning

- Diversified factor strategy that can be utilized as a core international equity allocation.
- Designed for investors seeking a high-conviction, international factor portfolio diversified across geographies, sectors, and factors (Value, Momentum, Shareholder Yield, and Quality).

Philosophy

O'Shaughnessy believes in applying empirical, fundamental research to uncover strong quantitative equity strategies. OSAM has conducted research covering more than 50 years of market data to identify the characteristics that historically lead to strong stock selection. This research forms the basis of each strategy. The investment process is generally transparent and used to select stocks in a logical, unemotional way, appealing to common sense. OSAM does not allow short-term market events to distract from strategy discipline.

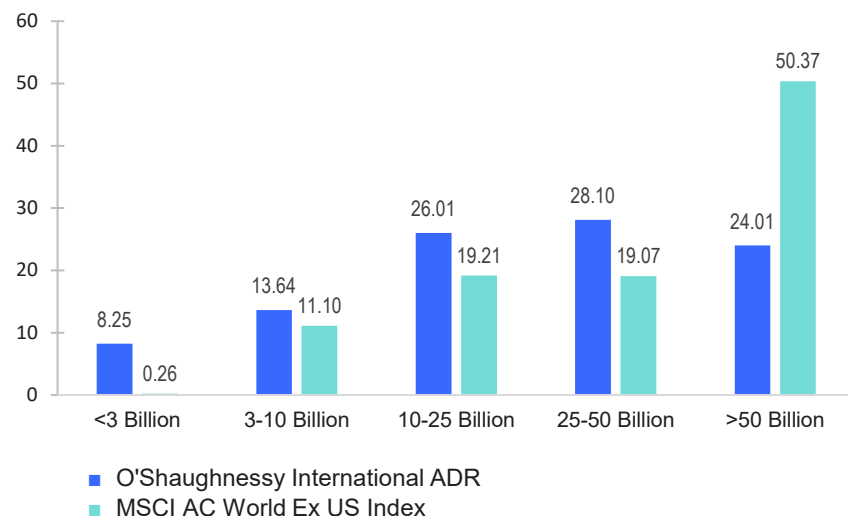
What are the risks?

All investments involve risks, including possible loss of principal. Depositary receipts are subject to international investment risk and potentially negative effects from currency exchange rates, foreign taxation and differences in auditing and other financial standards. **International investments** are subject to special risks, including currency fluctuations and social, economic and political uncertainties, which could increase volatility. These risks are magnified in **emerging markets**. **Small and mid cap stocks** involve greater risks and volatility than large cap stocks.

Equity portfolio characteristics

As of 12/31/2024

Market capitalization breakdown in USD (%)



Portfolio characteristics

	O'Shaughnessy International ADR	MSCI AC World Ex US Index
Number of Issuers	104	2,058
Price to Earnings (12-Month Trailing)	9.48x	15.52x
Dividend Yield	3.65%	2.76%
Median Market Cap (Millions USD)	\$18,679	\$10,500
Weighted Average Market Capitalization (Millions USD)	\$51,648	\$109,227
Active Share	87.78%	-
Trailing 12 Mth Price Appreciation	33.30%	14.56%
Shareholder Yield	6.34%	3.30%
Price to Sales	0.89x	1.42x
Portfolio Turnover	57.74%	-

Source: FactSet. Portfolio characteristics and holdings are based on a group of representative accounts and assumes no withdrawals, contributions or client-imposed restrictions. Portfolio characteristics of individual client accounts may differ from those of the representative accounts as a result of account size, client-imposed restrictions, the timing of client investments, market conditions, contributions, withdrawals and other factors. Please see Endnotes for additional information. **Please see appendix for term definitions.**

Equity portfolio characteristics

As of 12/31/2024

Sector weightings (%)	O'Shaughnessy International ADR	MSCI AC World Ex US Index
Financials	27.48	23.71
Industrials	13.60	13.95
Consumer Discretionary	13.53	11.16
Information Technology	11.70	13.53
Communication Services	8.43	5.87
Consumer Staples	8.24	6.97
Materials	7.84	6.29
Energy	5.37	4.95
Health Care	3.80	8.76
Utilities	0.00	3.03
Real Estate	0.00	1.77

Top holdings (%)	O'Shaughnessy International ADR
CELESTICA INC	3.03
HITACHI LTD	2.71
NASPERS LTD	2.53
STANDARD CHARTERED PLC	2.44
WH GROUP LTD	2.41
SEIKO EPSON CORP	2.23
SUMITOMO ELECTRIC INDS LTD	2.21
UNICREDIT SPA	1.94
VALE SA	1.91
KT CORPORATION	1.90
Total	23.31

Source: FactSet. Portfolio characteristics and holdings are based on a group of representative accounts and assumes no withdrawals, contributions or client-imposed restrictions. Portfolio characteristics of individual client accounts may differ from those of the representative accounts as a result of account size, client-imposed restrictions, the timing of client investments, market conditions, contributions, withdrawals and other factors. Please see Endnotes for additional information. **Please see appendix for term definitions.**

Performance

Annualized rates of return – gross and net of fees (%) as of December 31, 2024

	1 Mth	3 Mths	YTD	1 Year	3 Year	5 Year	7 Yrs	10 Year	Since Incept
O'Shaughnessy International ADR–Gross of Fees—(USD)	-1.68	-2.44	15.00	15.00	6.82	8.84	6.42	7.97	6.80
O'Shaughnessy International ADR–Net of Fees—(USD)	-1.73	-2.61	14.33	14.33	6.21	7.97	5.09	6.18	4.50
MSCI AC World Ex US Index—(USD)	-1.94	-7.60	5.53	5.53	0.82	4.10	3.53	4.80	4.39

Calendar-year total returns – gross and net of fees (%) ending December 31

	2024	2023	2022	2021	2020	2019	2018	2017	2016	2015
O'Shaughnessy International ADR–Gross of Fees—(USD)	15.00	19.49	-11.30	16.88	7.19	17.69	-13.97	29.57	6.26	1.13
O'Shaughnessy International ADR–Net of Fees—(USD)	14.33	18.83	-11.81	16.11	5.48	14.81	-16.00	26.30	3.39	-1.42
MSCI AC World Ex US Index—(USD)	5.53	15.62	-16.00	7.82	10.65	21.51	-14.20	27.19	4.50	-5.66

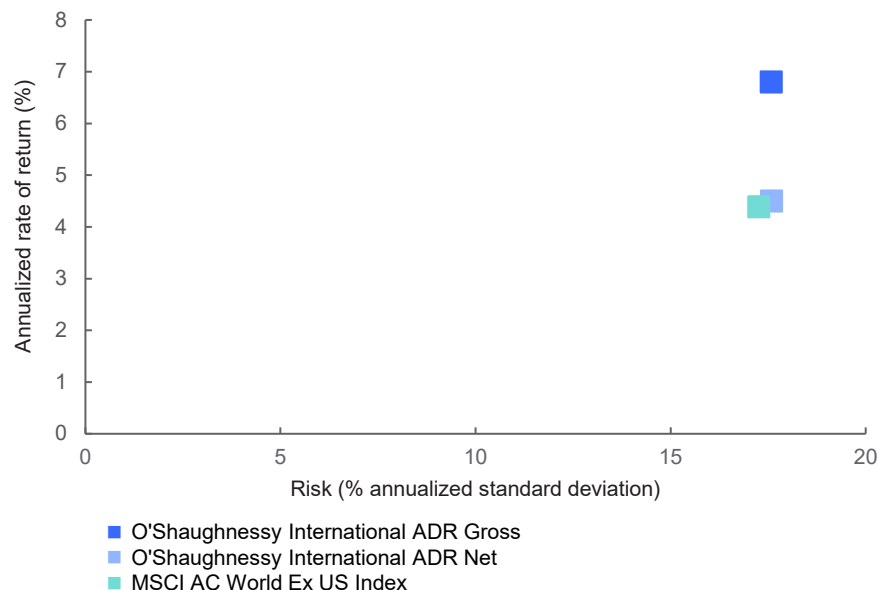
Since Inception Date: 1/1/2006.

Periods less than one year are not annualized. Performance results are for the composite which includes all actual, fully discretionary accounts with substantially similar investment policies and objectives managed to the composite's investment strategy. Composite returns are stated in U.S. dollars and assume reinvestment of any dividends, interest income, capital gains, or other earnings. The composite may include account(s) that are gross of fees and pure gross of fees. "Pure" gross-of-fee returns do not reflect the deduction of any expenses, including transaction costs. A traditional (or "true") gross-of-fee return reflects performance after the reduction of transaction costs but before the reduction of the investment advisory fee. The gross-of-fee return may include a blend of "true" gross-of-fee returns for non-wrap accounts and "pure" gross-of-fee returns for wrap accounts. Net-of-fee returns are reduced by a model "wrap fee" (3.0% is the maximum anticipated wrap fee for equity and balanced portfolios) which includes trading expenses as well as investment management, administrative and custodial fees. The model wrap fee used represents the highest anticipated wrap fee applicable to the strategy. Actual fees and account minimums may vary.

For fee schedules, contact your financial professional. Management and performance of individual accounts may vary for reasons that include the existence of different implementation practices and model requirements in different investment programs. Past performance is not a guarantee of future results. Please see appendix for GIPS® Report and term definitions.

Risk/return profile

Gross and net of fees (based on since inception period ending December 31, 2024)



Modern portfolio statistics as of December 31, 2024

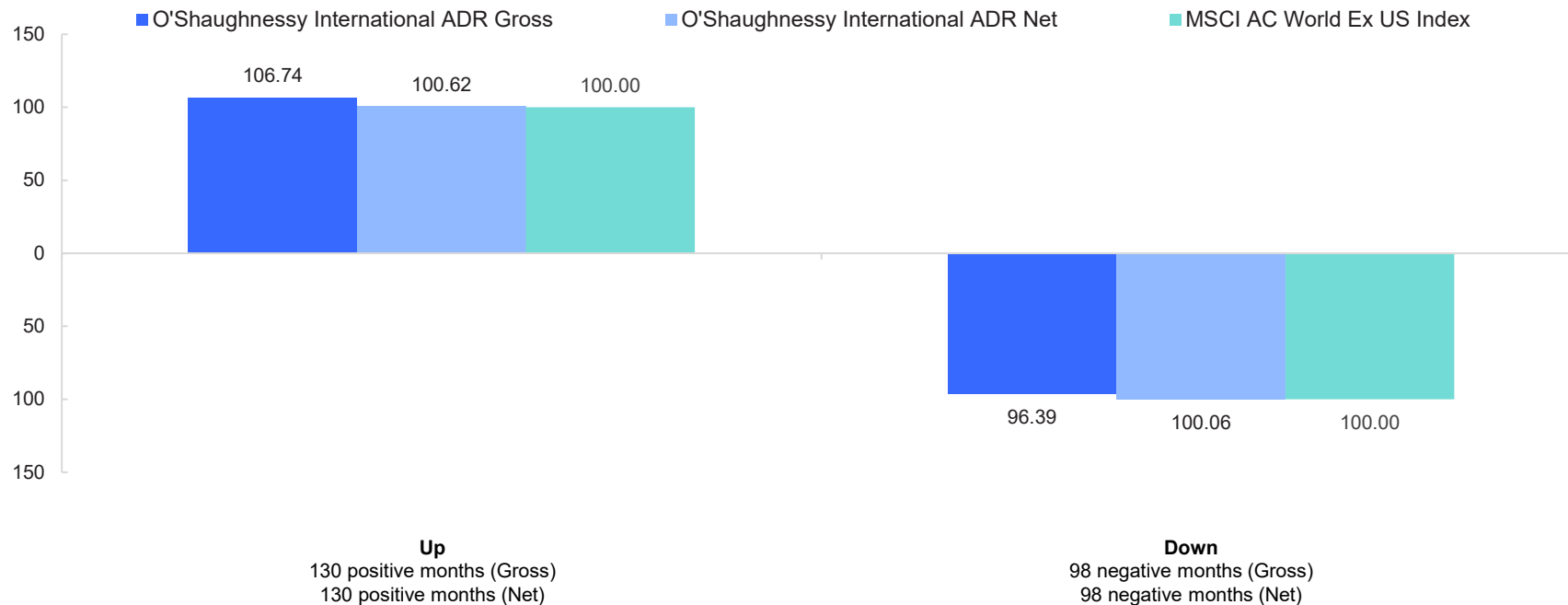
	O'Shaughnessy International ADR Gross	O'Shaughnessy International ADR Net	MSCI AC World Ex US Index
Annualized Return (%)	6.80	4.50	4.39
Annualized Standard Deviation (%)	17.58	17.59	17.26
Sharpe Ratio	0.30	0.17	0.16
Beta	0.98	0.98	N/A
Tracking Error (%)	4.73	4.77	N/A
Information Ratio	0.51	0.02	N/A

Alpha, Beta, Sharpe Ratio, and R-Squared are shown versus the Index. Investors cannot invest directly in an index and unmanaged index returns do not reflect any fees, expenses or sales charges. Periods less than one year are not annualized. Performance results are for the composite which includes all actual, fully discretionary accounts with substantially similar investment policies and objectives managed to the composite's investment strategy. Composite returns are stated in U.S. dollars and assume reinvestment of any dividends, interest income, capital gains, or other earnings. The composite may include account(s) that are gross of fees and pure gross of fees. "Pure" gross-of-fee returns do not reflect the deduction of any expenses, including transaction costs. A traditional (or "true") gross-of-fee return reflects performance after the reduction of transaction costs but before the reduction of the investment advisory fee. The gross-of-fee return may include a blend of "true" gross-of-fee returns for non-wrap accounts and "pure" gross-of-fee returns for wrap accounts. Net-of-fee returns are reduced by a model "wrap fee" (3.0% is the maximum anticipated wrap fee for equity and balanced portfolios) which includes trading expenses as well as investment management, administrative and custodial fees. The model wrap fee used represents the highest anticipated wrap fee applicable to the strategy. Actual fees and account minimums may vary.

For fee schedules, contact your financial professional. Management and performance of individual accounts may vary for reasons that include the existence of different implementation practices and model requirements in different investment programs. Past performance is not a guarantee of future results. Please see appendix for GIPS® Report and term definitions.

Up down market capture ratios (%)

Gross and net of fees (based on since inception period ending December 31, 2024)

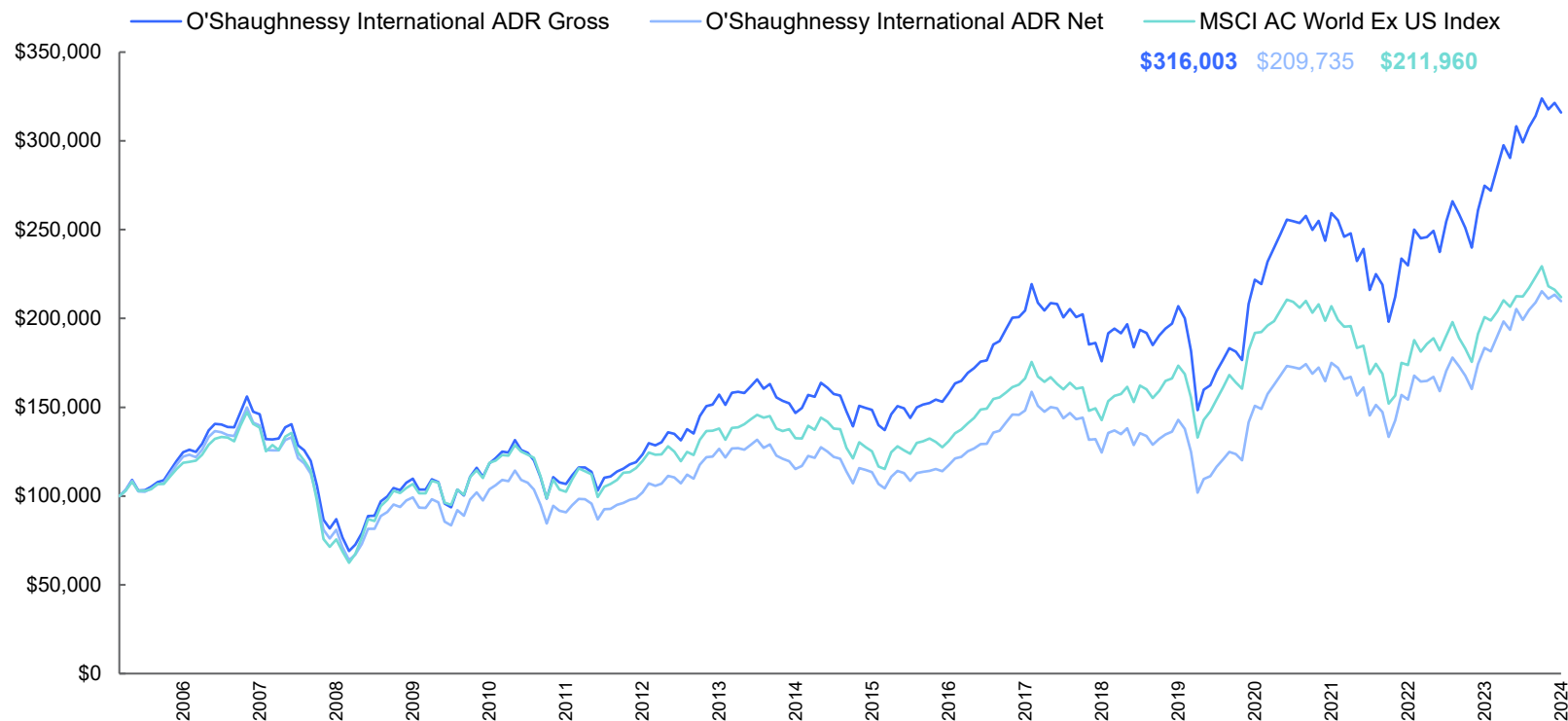


Periods less than one year are not annualized. Performance results are for the composite which includes all actual, fully discretionary accounts with substantially similar investment policies and objectives managed to the composite's investment strategy. Composite returns are stated in U.S. dollars and assume reinvestment of any dividends, interest income, capital gains, or other earnings. The composite may include account(s) that are gross of fees and pure gross of fees. "Pure" gross-of-fee returns do not reflect the deduction of any expenses, including transaction costs. A traditional (or "true") gross-of-fee return reflects performance after the reduction of transaction costs but before the reduction of the investment advisory fee. The gross-of-fee return may include a blend of "true" gross-of-fee returns for non-wrap accounts and "pure" gross-of-fee returns for wrap accounts. Net-of-fee returns are reduced by a model "wrap fee" (3.0% is the maximum anticipated wrap fee for equity and balanced portfolios) which includes trading expenses as well as investment management, administrative and custodial fees. The model wrap fee used represents the highest anticipated wrap fee applicable to the strategy. Actual fees and account minimums may vary.

For fee schedules, contact your financial professional. Management and performance of individual accounts may vary for reasons that include the existence of different implementation practices and model requirements in different investment programs. Past performance is not a guarantee of future results. Please see appendix for GIPS® Report and term definitions.

Growth of \$100,000

Gross and net of fees (based on since inception period ended December 31, 2024)



For illustrative purposes only. Assumes no withdrawals or contributions. These statistics are based on gross and net-of-fees monthly composite returns, were calculated assuming reinvestment of dividends and income, and take into account both realized and unrealized capital gains and losses.

Periods less than one year are not annualized. Performance results are for the composite which includes all actual, fully discretionary accounts with substantially similar investment policies and objectives managed to the composite's investment strategy. Composite returns are stated in U.S. dollars and assume reinvestment of any dividends, interest income, capital gains, or other earnings. The composite may include account(s) that are gross of fees and pure gross of fees. "Pure" gross-of-fee returns do not reflect the deduction of any expenses, including transaction costs. A traditional (or "true") gross-of-fee return reflects performance after the reduction of transaction costs but before the reduction of the investment advisory fee. The gross-of-fee return may include a blend of "true" gross-of-fee returns for non-wrap accounts and "pure" gross-of-fee returns for wrap accounts. Net-of-fee returns are reduced by a model "wrap fee" (3.0% is the maximum anticipated wrap fee for equity and balanced portfolios) which includes trading expenses as well as investment management, administrative and custodial fees. The model wrap fee used represents the highest anticipated wrap fee applicable to the strategy. Actual fees and account minimums may vary.

For fee schedules, contact your financial professional. Management and performance of individual accounts may vary for reasons that include the existence of different implementation practices and model requirements in different investment programs. Past performance is not a guarantee of future results. Please see appendix for GIPS® Report and term definitions.

Investment management team

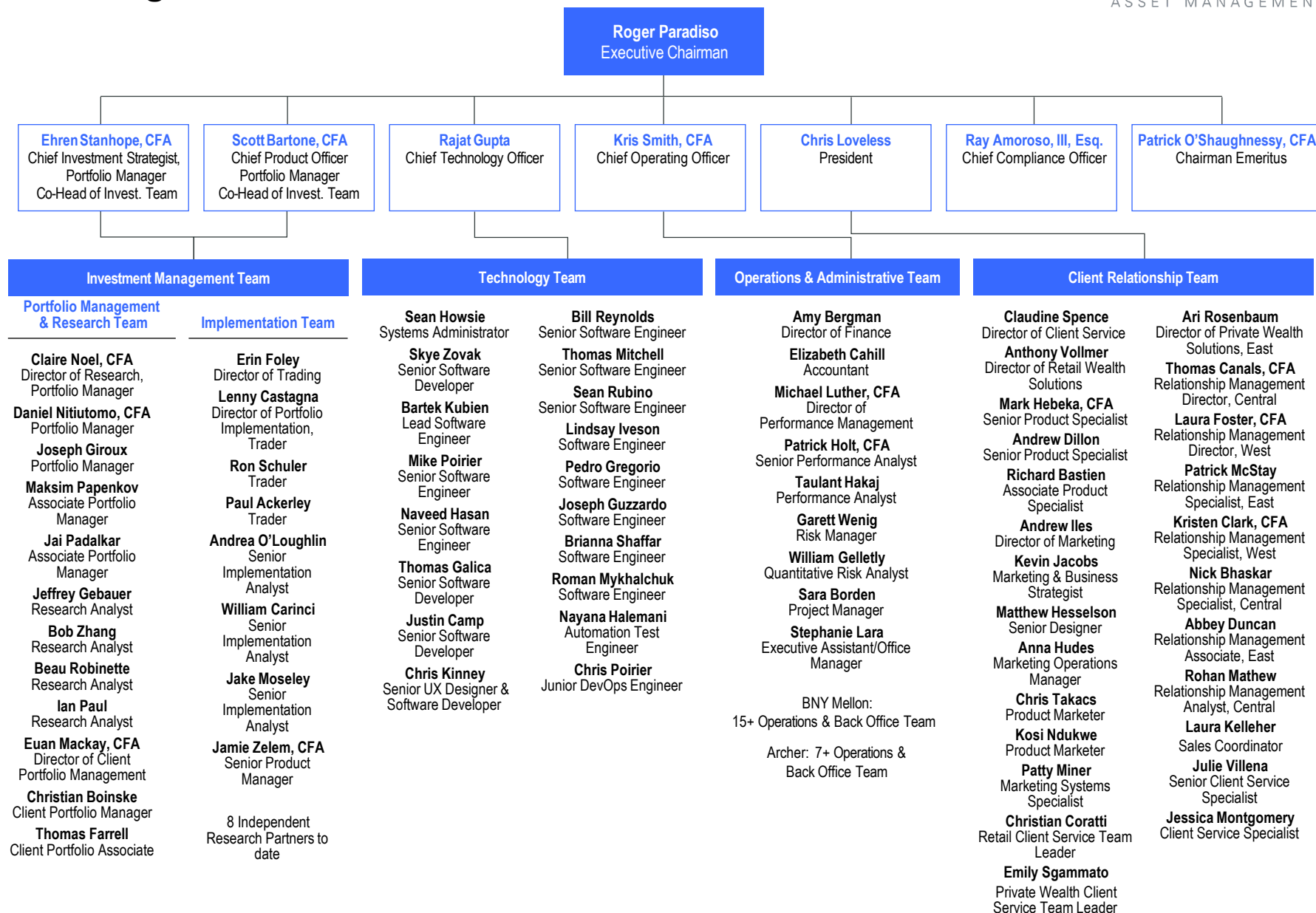
O'Shaughnessy Asset Management (OSAM) team-managed approach

- OSAM's investment team operates in a generalist structure where portfolio managers do research on and manage all strategies.
- Members of the team have access to leading data sources for idea generation, a proprietary research platform for testing ideas, and a seasoned team of technologists to aid in efficient implementation of research.

Combining multiple factors for a better investment signal



OSAM organizational structure



GIPS Report

O'Shaughnessy International ADR Composite Inception Date: 1/1/2006. Composite Creation Date: 8/1/2008.

Primary Index: MSCI AC World Ex US Index; Secondary Index: MSCI EAFE

Time Period	Composite "Blended" Return TWR(%)	Composite Net Return TWR (%)	Primary Index Return (%)	Secondary Index Return (%)	Number of Portfolios	Internal Equal Weighted Dispersion	Composite Assets (\$ mil)	3-Yr Ex Post Std Dev Composite Gross	3-Yr Ex Post Std Dev Primary Index	3-Yr Ex Post Std Dev Secondary Index	Total Firm Assets (\$ mil)	Wrap Accounts as a % of Composite Accounts
2024	15.00	14.33	5.53	3.82	33	1.03	121.8	16.91	16.02	16.61	13,490.8	0.00
2023	19.49	18.83	15.62	18.24	33	0.69	106.3	17.06	16.06	16.64	8,858.3	0.00
2022	-11.30	-11.81	-16.00	-14.45	31	0.64	74.8	22.18	19.25	19.99	7,482.5	0.00
2021	17.62	16.83	7.82	11.26	27	0.98	84.8	20.13	16.78	16.95	6,885.8	0.32
2020	7.19	5.48	10.65	7.82	17	0.80	8.1	21.10	17.94	17.89	4,824.2	14.46
2019	17.69	14.81	21.51	22.01	50	0.73	30.4	12.73	11.34	10.81	5,694.1	75.74
2018	-13.97	-16.00	-14.20	-13.79	49	0.32	32.4	11.78	11.38	11.24	5,150.6	69.04
2017	29.57	26.30	27.19	25.03	50	0.33	43.3	11.25	11.87	11.83	5,678.7	74.68
2016	6.26	3.39	4.50	1.00	56	0.36	34.4	11.90	12.51	12.46	5,331.5	73.99
2015	1.13	-1.42	-5.66	-0.81	71	0.40	37.5	12.19	12.13	12.46	5,354.8	78.57
2014	-6.63	-9.09	-3.87	-4.90	100	0.96	47.8	11.96	12.81	13.03	6,952.2	83.41
2013	27.33	23.97	15.29	22.78	117	0.68	61.5	15.88	16.23	16.25	6,491.6	87.25
2012	15.71	12.46	16.83	17.32	126	2.48	53.8	19.33	19.26	19.37	4,814.7	86.10
2011	-9.82	-12.51	-13.71	-12.14	161	2.60	56.6	22.64	22.71	22.43	4,414.3	96.66
2010	7.78	4.60	11.15	7.75	217	2.58	95.1	25.14	27.29	26.23	5,063.1	97.86
2009	26.22	22.60	41.45	31.78	262	3.34	98.3	22.76	25.24	23.58	4,991.3	98.06
2008	-40.48	-42.09	-45.53	-43.38	390	2.59	111.2	19.63	20.88	19.24	4,285.1	98.22
2007	17.27	14.46	16.65	11.17	540	4.25	271.6	N/A	N/A	N/A	10,876.7	100.00
2006	37.63	34.38	26.65	26.34	236	N/A	110.1	N/A	N/A	N/A	N/A	97.47

Basis of Presentation:

O'Shaughnessy Asset Management, LLC ("OSAM"), founded in 2007, is a Stamford, CT based quantitative money management firm and an SEC Registered Investment Advisor. OSAM became a wholly owned subsidiary of Franklin Templeton on December 31, 2021. We deliver a broad range of equity strategies, from micro cap to large cap, and growth to value. Our clients are individual investors, institutional investors, and the high-net-worth clients of financial advisors. James O'Shaughnessy and his team left Bear Stearns to form OSAM in July 2007. All the GIPS® rules of portability were met. Jim maintained continuous management of all accounts during the transition from BSAM to OSAM, which was completed in March 2008. The performance of a past firm or affiliation is being attributed to the performance of the current firm for all the periods starting 1996. Jim left OSAM on December 31, 2022. OSAM maintains consistent implementation of its quantitative investment process.

OSAM claims compliance with the Global Investment Performance Standards (GIPS®) and has prepared and presented this report in compliance with the GIPS standards. OSAM has been independently verified for the periods of 2007-2023. The current calendar year has not yet been independently verified. BSAM was independently verified in compliance with GIPS 2005-2006 and AIMR-PPS for the periods of 2002 - 2004. Independent verification was not conducted prior to 2002. The verification reports are available upon request.

A firm that claims compliance with the GIPS standards must establish policies and procedures for complying with all the applicable requirements of the GIPS standards. Verification provides assurance on whether the firm's policies and procedures related to composite and pooled fund maintenance, as well as the calculation, presentation, and distribution of performance, have been designed in compliance with the GIPS standards and have been implemented on a firm-wide basis. Verification does not provide assurance on the accuracy of any specific performance report.

GIPS Report

O'Shaughnessy International ADR Composite Inception Date: 1/1/2006. Composite Creation Date: 8/1/2008.

Primary Index: MSCI AC World Ex US Index; Secondary Index: MSCI EAFE

A list of OSAM's composite and pooled fund descriptions is available upon request.

The O'Shaughnessy International ADR strategy (the "Composite") generally seeks to provide long-term appreciation through exposure to international equities, primarily using American Depositary Receipts (ADRs), that the manager believes have better quality, valuation, momentum and yield.

The Composite was created in August 2008 to include both wrap fee and non wrap fee accounts and represents the performance of every fee paying account managed in the International ADR strategy, regardless of asset size. The investment advisory fee charged for the management of accounts in the strategy varies.

Institutional separate accounts are charged an annual investment advisory fee of 0.70%.

Wrap clients are charged the "wrap" fee set by the sponsor, and fees can vary by sponsor platform. Wrap fees include charges for trading costs, portfolio management, custody, and other administrative fees. For composite performance presentation purposes, wrap fee account returns are net at 3% annually, which reflects the highest applicable "wrap" fee charged by any sponsor across our distribution channel.

Non-wrap fee account returns are net of the OSAM advisory fee.

Additionally, gross-of-fees returns for wrap fee accounts are "pure" gross returns. "Pure" gross-of-fees returns do not reflect the deduction of any expenses, including transaction costs. "Pure" gross-of-fees returns are supplemental to net returns. A traditional (or "true") gross-of-fees return reflects performance after the reduction of transaction costs but before the reduction of the investment advisory fee. Since wrap fee accounts experience "bundled" pricing, it is often impossible to unbundle the transaction portion to calculate a gross-of-fees return and hence "pure" gross-of-fees returns are made available.

The "Blended" gross-of-fee return presented for this composite is a blend of "true" gross-of-fees returns for non-wrap and pooled funds clients (where the actual fee paid is identifiable) and "pure" gross-of-fees returns for wrap clients (for the reasons stated above). "Blended" gross-of-fee returns are supplemental to net returns.

Internal dispersion is calculated using the equal weighted standard deviation of annual gross returns of those portfolios that were included in the composite for the entire year. Total Firm Assets are presented from December 31, 2007, forward, consistent with the inception of our firm, and N/A is shown for prior periods. All investments are in U.S. equities and all returns are stated in U.S. Dollars. Policies for valuing investments, calculating performance, and preparing GIPS reports are available upon request.

The three-year annualized standard deviation measures the variability of the composite gross returns, and the benchmark returns over the preceding 36-month period.

The MSCI EAFE Index Net is a free float-adjusted market capitalization index that is designed to measure developed market equity performance, excluding the US & Canada. This index is net of withholding taxes.

The MSCI ACWI (All Country World Index) Index ex US Net is a free float-adjusted market capitalization index that is designed to measure equity market performance in the global developed and emerging markets, excluding the United States. This index is net of withholding taxes.

Due to a system error, the asset weighted dispersion was reported in the third quarter of 2024 rather than equal weighted dispersion. The report has been corrected to display equal weighted dispersion.

GIPS® is a registered trademark of CFA Institute. CFA Institute does not endorse or promote this organization, nor does it warrant the accuracy or quality of the content contained herein.

Definitions

Index Definitions

The **Bloomberg U.S. Government/Credit Bond Index** tracks the performance of the overall bond market and is a broad measure of the performance of government and corporate fixed-rate debt issues. Source: Bloomberg Indices.

The **FTSE 3-Month U.S. Treasury Bill Index** is an index based upon the average monthly yield of the 90-Day Treasury Bills. Treasury bills are secured by the full faith and credit of the U.S. Government and offer a fixed rate of return. Source: FTSE.

The **MSCI EAFE Index (Europe, Australasia, Far East)** is a free float-adjusted market capitalization-weighted index designed to measure developed market equity performance, excluding the U.S. and Canada. Source: MSCI makes no warranties and shall have no liability with respect to any MSCI data reproduced herein. No further redistribution or use is permitted. This report is not prepared or endorsed by MSCI.

The **MSCI World Index** is a free float-adjusted market-capitalization index that is designed to measure global developed market equity performance. Source: MSCI makes no warranties and shall have no liability with respect to any MSCI data reproduced herein. No further redistribution or use is permitted. This report is not prepared or endorsed by MSCI.

The **MSCI World ex. US Index** consists of the following 22 developed market country indexes: Australia, Austria, Belgium, Canada, Denmark, Finland, France, Germany, Hong Kong, Ireland, Israel, Italy, Japan, Netherlands, New Zealand, Norway, Portugal, Singapore, Spain, Sweden, Switzerland, and the United Kingdom. Source: MSCI makes no warranties and shall have no liability with respect to any MSCI data reproduced herein. No further redistribution or use is permitted. This report is not prepared or endorsed by MSCI.

The **Russell 1000 Index** measures the performance of the large-cap segment of the U.S. equity universe. Source: FTSE.

The **Russell 1000 Growth Index** measures the performance of the large-cap growth segment of the U.S. equity universe. Source: FTSE.

The **Russell 1000 Value Index** measures the performance of the large-cap value segment of the U.S. equity universe. Source: FTSE.

The **Russell 2000 Index** measures the performance of the small-cap segment of the U.S. equity universe. Source: FTSE.

The **Russell 2000 Growth Index** measures the performance of the small-cap growth segment of the U.S. equity universe. Source: FTSE.

The **Russell 2000 Value Index** measures the performance of the small-cap value segment of the U.S. equity universe. Source: FTSE.

The **Russell 3000 Index** measures the performance of the 3,000 largest U.S. companies based on total market capitalization. Source: FTSE.

The **Russell 3000 Growth Index** measures the performance of those Russell 3000 Index companies with higher price-to-book ratios and higher forecasted growth values. Source: FTSE.

The **Russell MidCap Index** measures the performance of the mid-cap segment of the U.S. equity universe. Source: FTSE.

The **Russell MidCap Growth Index** measures the performance of the mid-cap growth segment of the U.S. equity universe. Source: FTSE.

The **Russell MidCap Value Index** measures the performance of the mid-cap value segment of the U.S. equity universe. Source: FTSE.

The **S&P 500 Index** features 500 leading U.S. publicly traded companies, with a primary emphasis on market capitalization. Source: © S&P Dow Jones Indices LLC. All rights reserved.

Investors cannot invest directly in an index and unmanaged index returns do not reflect any fees, expenses or sales charges.

Definitions

Term definitions

Market Capitalization measures the number of outstanding common shares of a given corporation multiplied by the latest price per share.

Weighted Median Market Capitalization represents the value at which half the portfolio's market capitalization weight falls above, and half falls below.

Weighted Average Market Capitalization represents the average value of the companies held in the portfolio. When that figure is weighted, the impact of each company's capitalization on the overall average is proportional to the total market value of its shares.

Dividend Yield is determined by dividing a stock's annual dividends per share by the current market price per share. Dividend yield is a financial ratio that shows how much a company pays out in dividends.

P/E (Year 1) is the previous day's closing price of the stock divided by the consensus earnings per share (EPS) of fiscal year 1 (FY1) provided by I/B/E/S. Forecasts are inherently limited and should not be relied upon as indicators of future performance.

The **Price-to-Book** ratio (P/B) is a stock's price divided by the stock's per share book value.

Earnings Per Share (EPS) is the portion of a company's profit allocated to each outstanding share of a common stock.

The **Sharpe Ratio** is a risk-adjusted measure, calculated using standard deviation and excess return to determine reward per unit of risk. The higher the Sharpe Ratio, the better the portfolio's historical adjusted performance.

Alpha is a measure of the difference between actual returns and expected performance, given the level of risk as measured by Beta, where **Beta** measures sensitivity to benchmark movements.

R-Squared measures the strength of the linear relationship between the portfolio and its benchmark. R-squared at 1.0 implies perfect linear relationship and zero implies no relationship exists.

Standard Deviation is based on quarterly data. Standard deviation is a measure of the variability of returns; the higher the standard deviation, the greater the range of performance (i.e., volatility).

The **Capture Ratios** measure a manager's composite performance relative to the benchmark, considering only those quarters that are either positive (Up) or negative (Down) for the benchmark.

An **Up Market Capture Ratio** greater than 1.0 indicates a manager who has outperformed the benchmark in the benchmark's positive quarters.

A **Down Market Capture Ratio** of less than 1.0 indicates a manager who has outperformed the relative benchmark in the benchmark's negative quarters.

Definitions

Term definitions

Earnings before interest, taxes, depreciation and amortization (EBITDA) approximates a firm's operating cash flow by considering its earnings before interest, taxes, depreciation and amortization.

Free Cash Flow measures the cash remaining after accounting for a firm's cash expenditures to support its operations and maintain its capital assets.

Market Capitalization measures the number of outstanding common shares of a given corporation multiplied by the latest price per share.

Weighted Median Market Capitalization represents the value at which half the portfolio's market capitalization weight falls above, and half falls below.

Weighted Average Market Capitalization represents the average value of the companies held in the portfolio. When that figure is weighted, the impact of each company's capitalization on the overall average is proportional to the total market value of its shares.

Dividend Yield is determined by dividing a stock's annual dividends per share by the current market price per share. Dividend yield is a financial ratio that shows how much a company pays out in dividends.

P/E (Year 1) is the previous day's closing price of the stock divided by the consensus earnings per share (EPS) of fiscal year 1 (FY1) provided by I/B/E/S. Forecasts are inherently limited and should not be relied upon as indicators of future performance.

The **Price-to-Book** ratio (P/B) is a stock's price divided by the stock's per share book value.

Earnings Per Share (EPS) is the portion of a company's profit allocated to each outstanding share of a common stock.

The **Sharpe Ratio** is a risk-adjusted measure, calculated using standard deviation and excess return to determine reward per unit of risk. The higher the Sharpe Ratio, the better the portfolio's historical adjusted performance.

Alpha is a measure of the difference between actual returns and expected performance, given the level of risk as measured by **Beta**, where Beta measures sensitivity to benchmark movements.

R-Squared measures the strength of the linear relationship between the portfolio and its benchmark. R-squared at 1.0 implies perfect linear relationship and zero implies no relationship exists.

Standard Deviation is based on quarterly data. Standard deviation is a measure of the variability of returns; the higher the standard deviation, the greater the range of performance (i.e., volatility).

The **Capture Ratios** measure a manager's composite performance relative to the benchmark, considering only those quarters that are either positive (Up) or negative (Down) for the benchmark.

An **Up Market Capture Ratio** greater than 100 indicates a manager who has outperformed the benchmark in the benchmark's positive quarters.

A **Down Market Capture Ratio** of less than 100 indicates a manager who has outperformed the relative benchmark in the benchmark's negative quarters.



(800) DIAL BEN/342-5236

At Franklin Templeton, everything we do has a single focus: to deliver better client outcomes.

- We have deep expertise across equity, fixed income, alternatives, multi-asset solutions and cash strategies
- We offer an unmatched range of specialist investment managers, consisting of more than 1,500 investment professionals
- Over 75 years of experience in identifying opportunities and delivering investment solutions to clients.

franklintempleton.com

Investments for the program(s) discussed herein are traded primarily in U.S. markets and unless otherwise noted, equity and fixed income investments for such program(s) are primarily of U.S. issuers. In addition, unless otherwise noted, indexes referred to herein represent groups of securities that are issued primarily by U.S. issuers.

IMPORTANT TAX INFORMATION:

Franklin Templeton, its affiliates, and its employees are not in the business of providing tax or legal advice to taxpayers. These materials and any tax-related statements are not intended or written to be used, and cannot be used or relied upon, by any such taxpayer for the purpose of avoiding tax penalties or complying with any applicable tax laws or regulations. Tax-related statements, if any, may have been written in connection with the "promotion or marketing" of the transaction(s) or matter(s) addressed by these materials, to the extent allowed by applicable law. Any such taxpayer should seek advice based on the taxpayer's particular circumstances from an independent tax advisor.